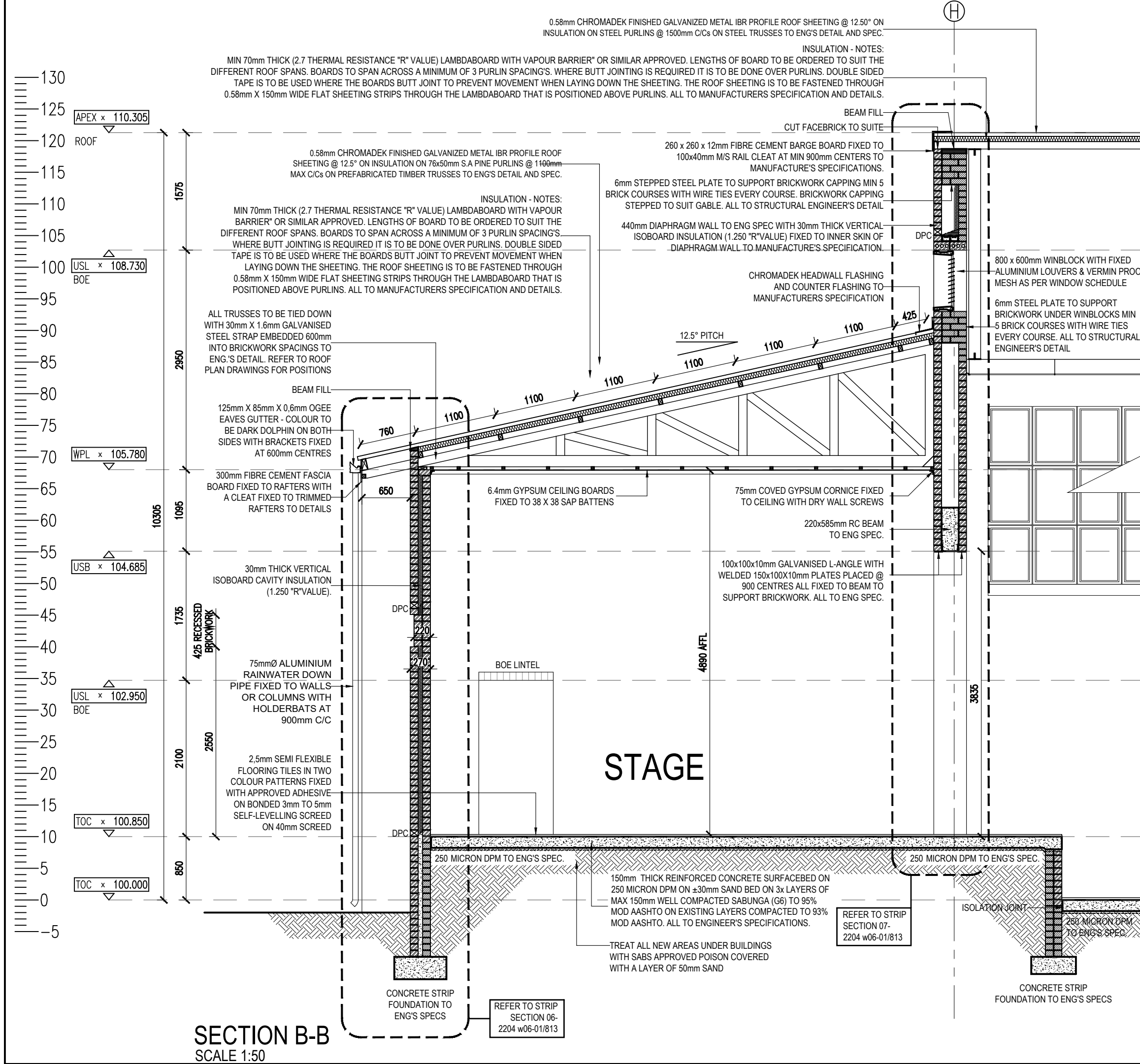
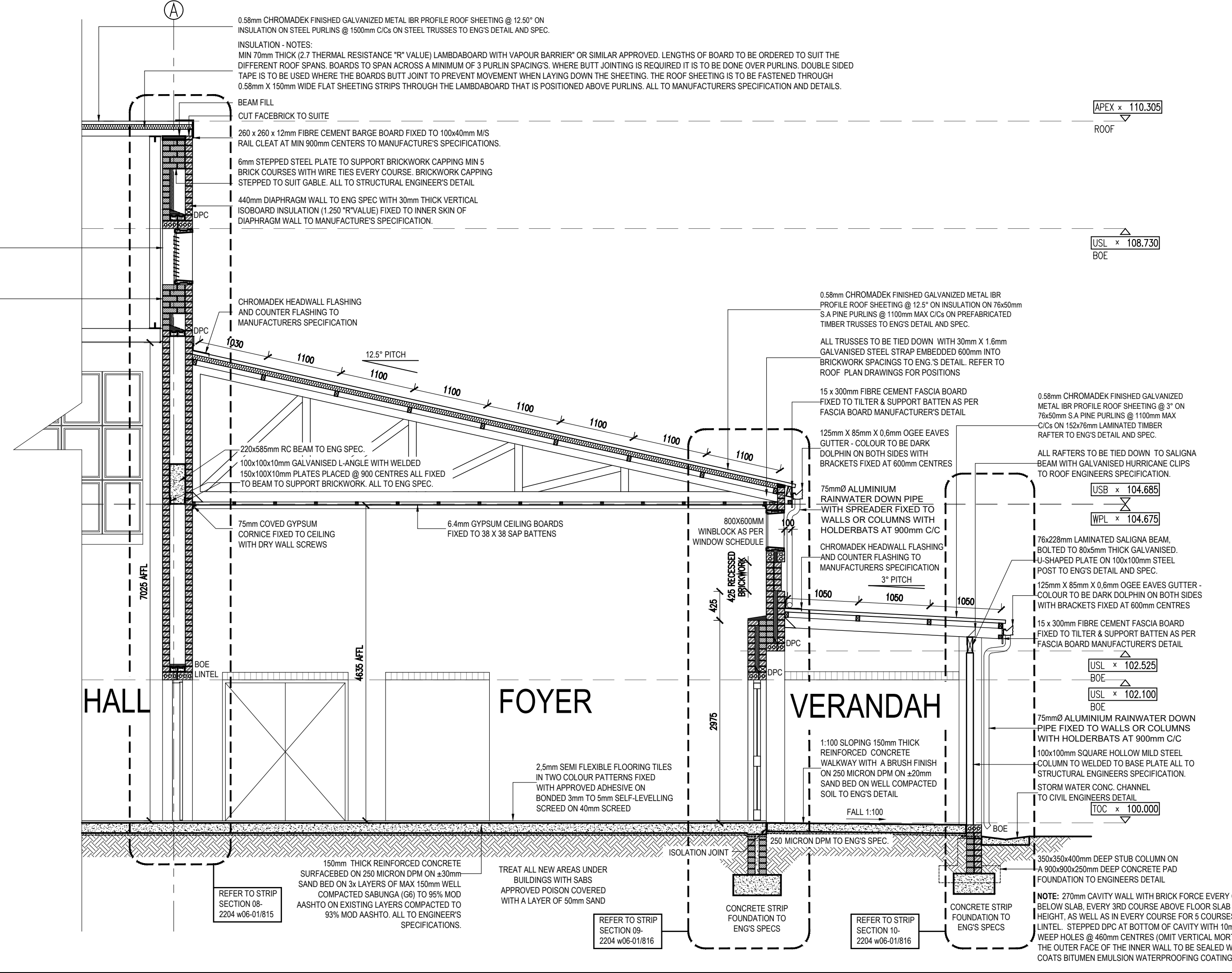
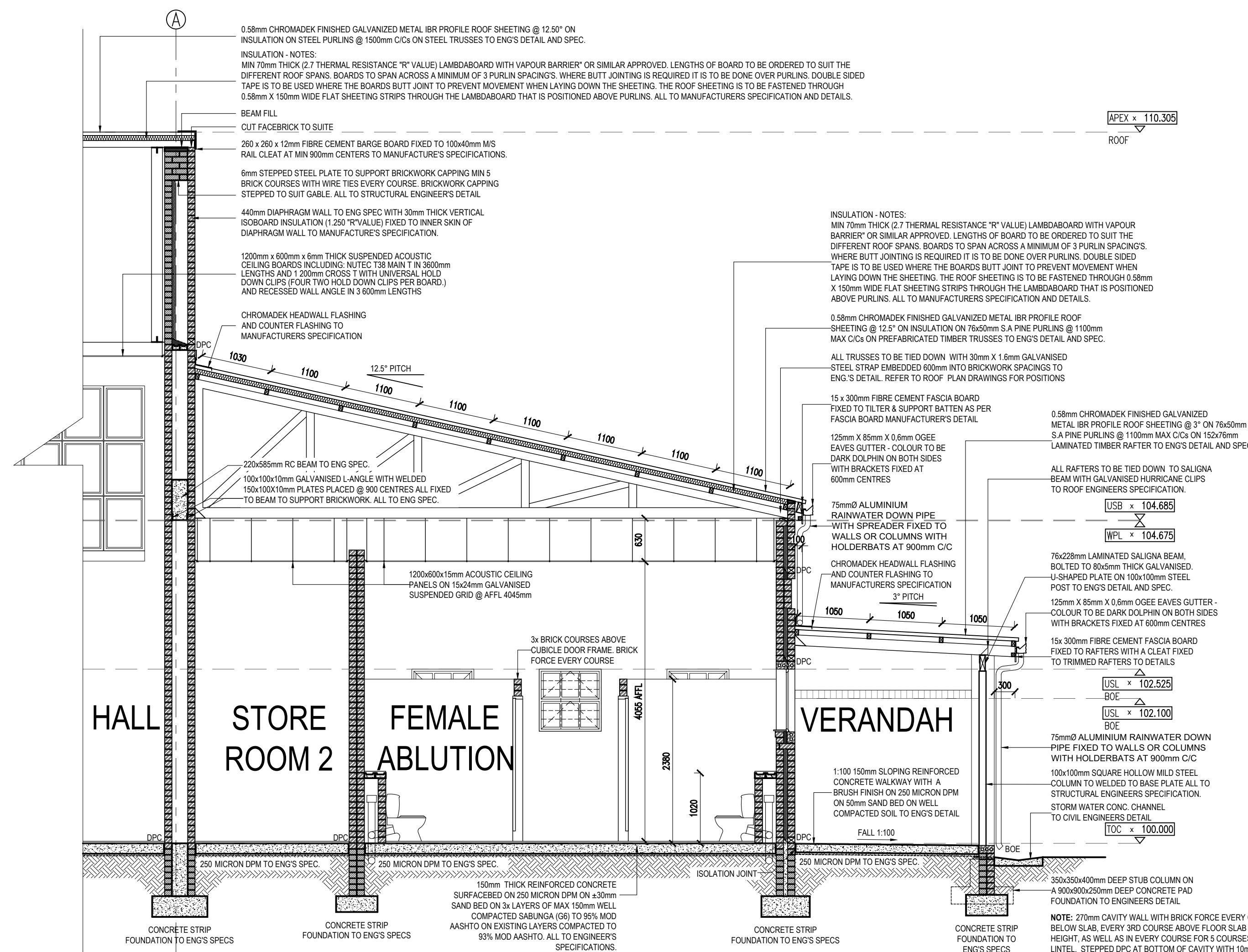


SECTION A-A
SCALE 1:50



SECTION B-B
SCALE 1:50



NO.	DATE	REVISION	DRAWN
A	2017-05-12	ISSUED FOR MEASURE	SG
B	2021-03-01	ISSUED FOR INFORMATION i) ADDED STORE ROOM 2 ii) ADDED TUCKERSHOP iii) CHANGED 330 x 330mm VERANDAH COLUMNS TO 100 x 100mm STEEL POSTS	DW RJS
C	2022-07-08	ISSUED FOR MEASURE ISSUED FOR INFORMATION (EWS) 1. DWG NO. CHANGED FROM 1617 TO 2204	DW
AA	2022-08-19	ISSUED FOR MEASURE IN PREVIOUS REV C 1. LEVELS INDICATED USING 100.000 AS T.O.C.	DW

ISSUED FOR APPROVAL

KEY

PSP

ARCHITECT

- mpande - consultants
architects & project managers

13 Cumberland Street, Mithatha
P.O. Box 7180
Mithatha, 5100
Tel: 047 532 5382
Fax: 086-648-2131

18 Lower Gedenys Drive,
Emmarentia, Johannesburg
P.O. Box 19124
Auckland Park, 2006
Tel: 011-486-2623
Fax: 086-648-1935
Email: mpande@mpandec.co.za

ARCHITECTURAL PROFESSIONAL SACAP NUMBERS:
H.L. MANTEL SACAP 3045

IMPLEMENTED BY

INDEPENDENT DEVELOPMENT TRUST

SIGNATURE	DATE	SHEET NO.
DESIGNED		A1
DRAWN		1:100
VERIFIED		STATUS: LEGEND
VALIDATED		I = INFORMATION A = FOR APPROVAL C = TENDER AB = AS BUILT

CLIENT

Province of the **EASTERN CAPE**
EDUCATION

IMPLEMENTING AGENT

PROJECT
DOE PORTFOLIO PROGRAMME
ESTABLISHMENT OF NEW SCHOOLS
HILLBROW - SENIOR SECONDARY SCHOOL
PROVINCE: EASTERN CAPE PROVINCE

DRAWING TITLE
MULTI-PURPOSE HALL (BLOCK S-Y)
SECTION A-A AND B-B

DRAWING DESCRIPTION
--

DWG NUMBER	DISCIPLINE	DRAWING NUMBER	STATUS	REVISION
200500293	ARCH	2204 w03-07/301	FA	AA